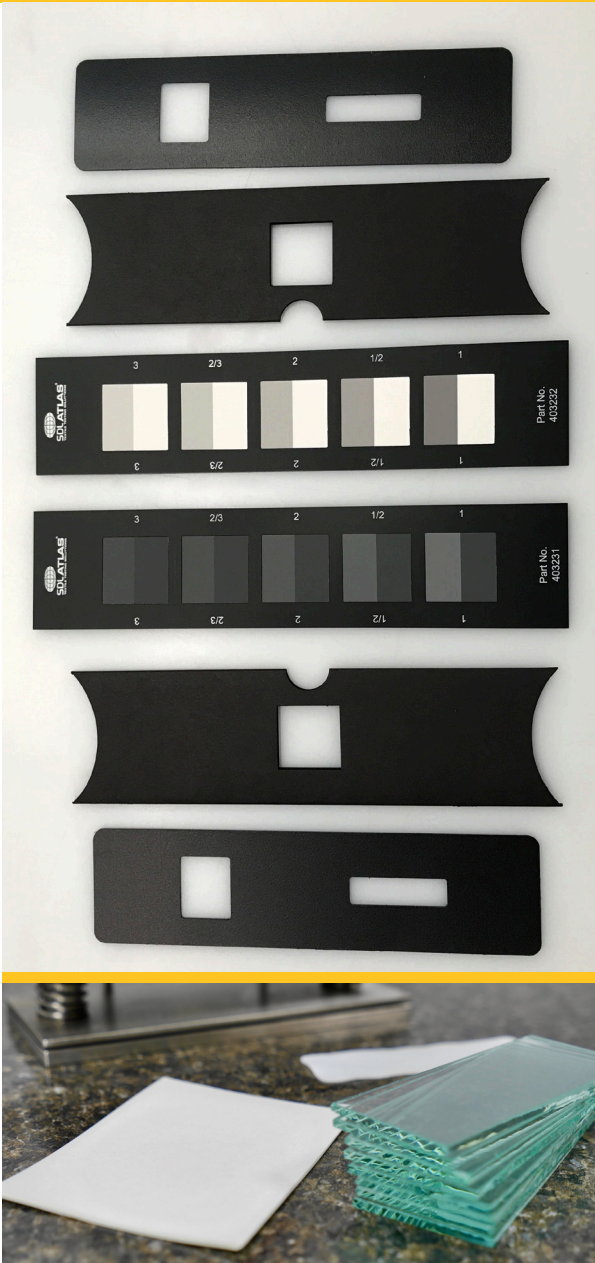


Conformity



Consistency



Confidence



TEST MATERIALS

Standard Materials for Standards Based Testing

Consistent Quality

Batch after Batch.

Each batch of test materials supplied by SDL Atlas is thoroughly tested to ensure conformity and consistency from batch to batch to provide our customers with the utmost confidence in their standards-based testing. All of the test materials we sell are of the highest quality and meet international and retailer standards.

SDL Atlas offers the broadest range of test materials in the textile and home appliance testing markets. Our extensive inventory provides a single source solution, plus we offer technical expertise to assist in making testing efficient, precise and compliant.

We offer multifibers and detergents for wash fastness tests, crocking supplies, ballasts, abrasion and pilling supplies, specialized test materials for specific instruments, test materials for home appliance testing and more.



CERTIFICATE OF CONFORMANCE

Date of Issue: June 02, 2021

Product: Woven Felt, 1 m piece

Part Number: 200947
Batch: UF108

We hereby certify that the above product has been evaluated according to appropriate standards and conforms to the specifications as outlined in:

ISO 12947-1, ISO 12945-2, ISO 5470-2, ISO 20344, ASTM D4966, ASTM D4970, EN 530, JIS L1096

Our Guarantee: Each batch of test materials supplied by SDL Atlas is tested through rigorous internal inspections to ensure conformity and consistency in order to provide our customers with the utmost confidence in their standards-based testing.

Approved Signatory:


John Olivet
SDL Atlas, Production / Quality Manager

Providing confidence in standard based testing through expertise and global partnering.
www.sdlatlas.com

Each item comes with an official Certificate of Conformity detailing the compliance to standards while consistency is ensured by archiving every tested sample – logging and documenting every batch. Certificates can be downloaded at www.sdlatlas.com

Crockmeter Test Materials

SDL Atlas manufactures high quality Pre-Cut Crocking Cloth for all major international standards including AATCC, ISO, Next, and M&S standards. We also supply Crockmeter Verification Fabric, Green Felt and Emery Paper for your convenience.

Each batch of Crocking Test Materials supplied by SDL Atlas is thoroughly tested to ensure conformity and consistency from batch to batch to provide our customers with the utmost confidence in their standards-based testing.



Ordering Information

Crockmeter Squares for American Standards 2" x 2" 1,000 pieces	200877
Crockmeter Fabric for American Standards per yard	200878
Crockmeter Squares for European Standards 2" x 2" 1,000 pieces	403532
Crockmeter Fabric for European Standards per meter	403011
Crockmeter Verification Fabric per yard	200782
Crockmeter Verification Fabric 50 x 150 mm 25 pieces	103871
Green Felt 2" x 2" 1,000 pieces	201059
Emery Paper 25 sheets	103872



2" x 2" Crock Square



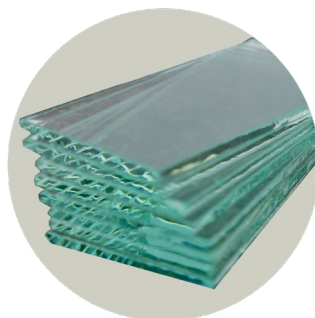
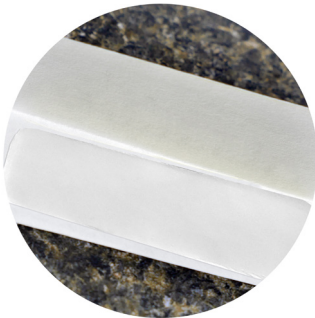
Crock Square mounted

Phenolic Yellowing

The Phenotest was developed to assess the potential of white, pale and pastel textiles to yellow during periods of warehouse storage or transit. SDL Atlas provides the necessary Test Materials for performing phenolic yellowing tests for ISO, Next and M&S Standards.

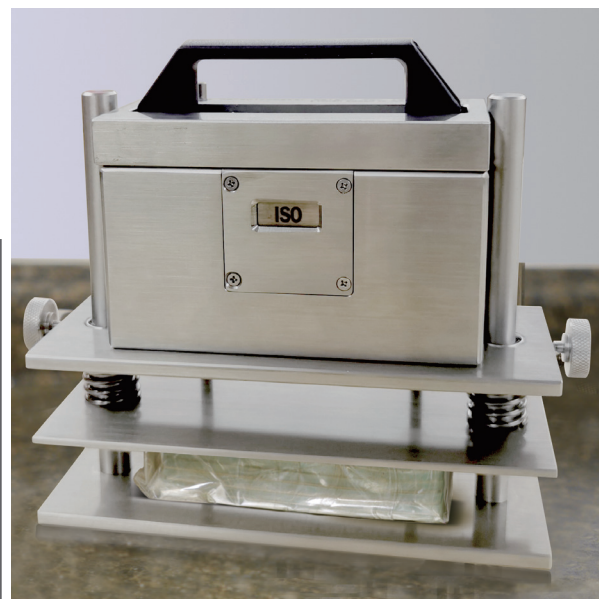


Phenotest Test Materials



Ordering Information

Impregnated Test Paper, pack of 30	107345
Impregnated Test Paper, pack of 150	106432
Phenotest Control Fabric, pack of 30	203038
Phenotest BHT-Free Plastic Film, 760 mm wide (doubled), pack of 15	106930
Phenotest BHT-Free Plastic Film, 400 mm x 200 mm, pack of 100	107650
Phenotest Glass Plates, pack of 10	200929
Film Cutting Template	201053



ISO Phenotest in progress

Wash Testing

SDL Atlas manufactures a variety of ballast and wash loads for dimensional stability and durability testing. In addition, we carry a full range of detergents for wash and colorfastness tests.



ECE and AATCC Detergents

Ballast Ordering Information

ISO Type 3 Polyester Ballast, 20 x 20 cm	403468
ISO Type 3 Polyester Ballast, 30 x 30 cm	403276
AATCC Type 1 Ballast 100% Woven Cotton, 36 x 36 in	401357
AATCC Type 3 Ballast 50/50% Woven Polyester/Cotton, 36 x 36 in	401359
Underwriters Laboratories (UL) 2157 100% Cotton Ballast, Double Hemmed - 22" x 34"	403380
Underwriters Laboratories (UL) 2157 100% Cotton Ballast, Double Hemmed - 10" x 10"	401365



100% Cotton Ballasts

Detergent Ordering Information

ECE Non-Phosphate Reference A Detergent - 2kg	403235
ECE Non-Phosphate Reference A Detergent - 15kg	403236
ECE Phosphate Reference B Detergent - 2kg	403237
ECE Phosphate Reference B Detergent - 15kg, For ISO C06	403238
IEC Non-Phosphate Reference A Detergent - 2 kg	403239
IEC Non-Phosphate Reference A Detergent - 15 kg	403240
TAED (Tetraacetylenediamine) 250 gm	403408
Perksheen Detergent, 1 gallon	201061
Sodium Perborate Tetrahydrate, 1 kg	401149
AATCC 1993 Reference Detergent with optical brightener, 7.3 kg	403657
AATCC 1993 Reference Detergent without optical brightener, 7.3 kg	403658

Pilling/Snagging Testing Materials

SDL Atlas provides the necessary Test Materials for performing all major test methods for Pilling and Snagging tests using the RotaPill Pilling and Snagging Tester and the Random Tumble Pilling Tester.

Our high quality items such as cork liners, cotton sliver, pilling and snagging tubes, templates, mounting jigs and much more have provided confidence that results achieved will remain consistent from test to test.



RotaPill Test Materials



Random Tumble Pilling Tester with Cork Liners

Ordering Information

Random Tumble Pilling Tester Test Materials

Cork Liners (pack of 50)	200771
Cotton Sliver (9 meters)	202324
White Adhesive	400112

RotaPill Test Materials

Sample Tubes (pack of 4)	101026
Unmounted Cork Linings (pack of 6)	101027
Snagging Points (set of 6)	107701
M&S Sample Tubes & Locking Rings (set of 8)	106841
M&S Liner and Step for Pilling & Snagging Drum	106885
Felt for Octagonal Snagging Drum Test	200947



RotaPill box with Cork Linings and Sample Tubes



Cork Liners



Cotton Sliver



White Adhesive



Pilling Tubes

Martindale Test Materials

SDL Atlas supplies a wide variety of Test Materials designed specifically for testing on the Martindale Abrasion and Pilling Testers. From standard abrasion and pilling tests to performing specialty tests for everything from flooring, gloves, socks, polished surfaces and more, our Test Materials will ensure that each test performed is reliable every time.



Martindale Test Materials



Martindale Abrasion and Pilling Tester ready to perform abrasion testing



Pre-Cut Abradant Disc

Ordering Information

Wool Abradant Fabric (SM25), 5 meters	403253
Felt Discs, 90 mm (pack of 20)	200910
Felt Discs, Woven 140 mm (pack of 20)	200971
Felt Discs, Nonwoven 140 mm (pack of 20)	200946
Felt, Woven, 1 m x 1.5 m	200947
Felt, Nonwoven, 1 m x 1.5 m	200945
Standard Backing Foam	108179
Sample Retaining Rings (pack of 20)	105136
PL31B Grit 180 Abrasion Paper (50 sheets)	107765
Silicon Carbide Paper (pack of 25)	200943
Trizact Synthetic Abrasion Discs, Green, 35 Microns (pack of 25)	201077
Trizact Synthetic Abrasion Discs, Orange, 5 Microns (pack of 25)	203289



Multifiber Fabric for AATCC and

SDL Atlas supplies multifiber fabric in a variety of sizes to meet all AATCC and ISO standards for assessing color transfer. Available in Cold Cut, Heat Sealed and Overcast, each box of multifiber supplied by SDL Atlas is thoroughly tested to ensure conformity and consistency from batch to batch to provide our customers with the utmost confidence in their standards-based testing. AATCC multifiber is sold pre-cut by the box or in 45" (115 cm) rolls by the meter.

Our DW and LW multifiber meet international and retailer standards and have been accepted by labs as an equal to other existing brands.



Stained Multifiber from Rotawash Container



Multifiber by the Roll is packaged in specially designed dispenser boxes for ease of use and to protect the product.



Close-Up of SDL Atlas Multifiber pre-cut pieces

ISO Standards

Ordering Information

AATCC #10 - Six filling stripes with 2-inch repeat, Filament Acetate, Bleached Cotton, Spun Nylon 6.6, Spun Polyester, Spun Acrylic, and Worsted Wool. Available in Heat Sealed (HS), Cold Cut (CC), or Overcast (OE) finishing.

45" (115 cm) by the Meter	200883 (meter)
2" X 2" #10 -500 HS and CC, 1000 OE	403724 (HS), 403725 (CC), 401725 (OE)
2" X 4" #10 -1000 pieces	300294 (HS), 300292 (CC), 401718 (OE)
2" X 6" #10 -1000 pieces	300297 (HS), 300295 (CC), 300296 (OE)

ISO & M&S #10A - Six filling stripes with 10-cm repeat, Filament Acetate, Bleached Cotton, Spun Nylon 6.6, Spun Polyester, Spun Acrylic, and Worsted Wool. Available in Heat Sealed (HS), Cold Cut (CC), or Overcast (OE) finishing.

45" (115 cm) by the Meter	200881
4 cm X 10 cm #10A -1000 pieces	200879 (HS), 300298 (CC), 400890 (OE)
5 cm X 10 cm #10A -1000 pieces	300302 (HS), 300300 (CC), 400891 (OE)

ISO TV - For High Temperature Wash Testing. Six warp stripes with 1.5-cm repeat, Filament Acetate, Bleached Cotton, Spun Nylon 6.6, Spun Polyester, Spun Acrylic, and Spun Viscose

4 cm X 10 cm -1000 pieces	300317
5 cm X 10 cm -1000 pieces	300319
10 Meter Roll	200828

ISO DW - Six warp stripes with 1.5-cm repeat, Filament Acetate, Bleached Cotton, Spun Nylon 6.6, Spun Polyester, Spun Acrylic, Worsted Wool

4 cm X 10 cm -250 pieces	403279
5 cm X 10 cm -200 pieces	403280
10 Meter Roll	403277
50 Meter Roll	403278

LW - For M&S and Retailer Methods. Six component yarn stripes, each measuring 15 mm. Consisting of Regenerated Cellulose, Bleached Cotton, Spun Nylon 6.6, Spun Polyester, Spun Acrylic and Worsted Wool

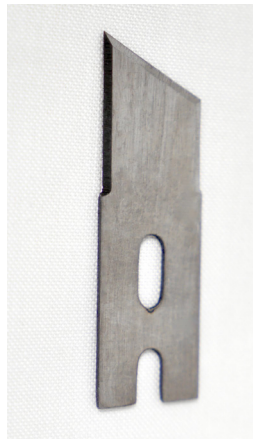
10 Meter Roll	403281
50 Meter Roll	403282

Other Test Materials

In addition to the items specifically mentioned here, SDL Atlas provides the most diverse variety of Test Material available from a single source. These pages show just a small sampling of what else we offer. For more information on SDL Atlas Test Materials, or to request a quote, contact an SDL Atlas solutions expert today.



Burst Tester Verification Fabric



Replacement
Cutting Blades



Stainless Steel Balls and Rubber Balls



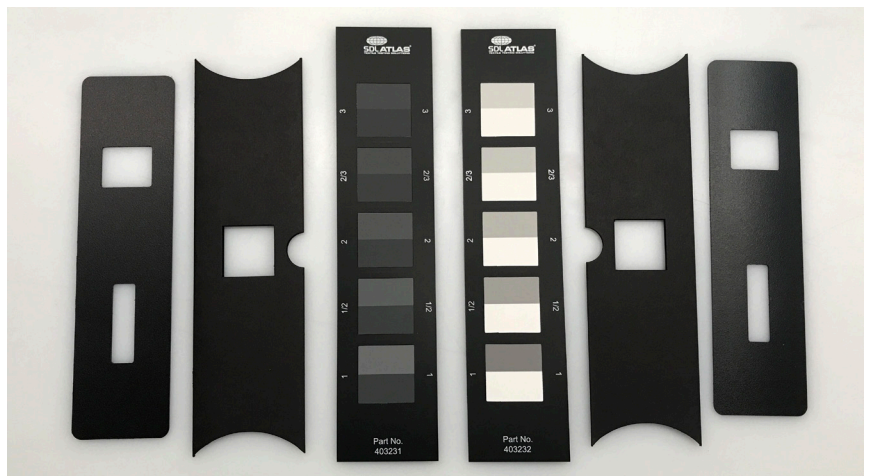
MMT Control Fabric



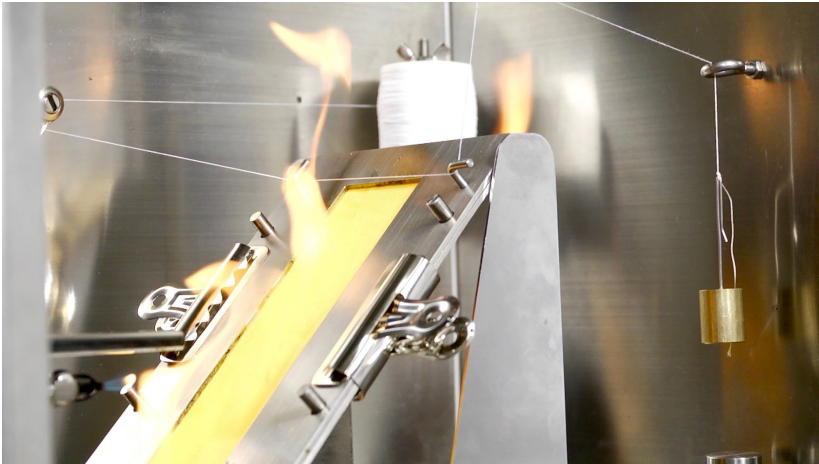
Universal Wear Tester Testing Materials



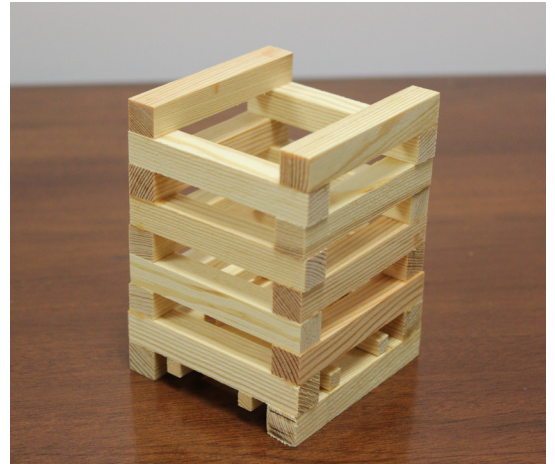
Shirlastain®



Gray Scales for Staining and Color Change



Flammability Test Materials



Wooden Cribs



Specialty Cut Fabrics



Lightfastness Test Materials



Snagging Test Materials



Bursting Diaphragms

To download a complete Test Materials Catalog, visit our website at www.sdlatlas.com.

Providing Confidence

For over 60 years, the SDL Atlas companies have been providing confidence in standard based testing through expertise and global partnering. Our customers can be assured that they are making informed decisions based on accurate test results.

SDL Atlas experts work closely with standards committees and retailers on development of standards. Our engineers develop instruments to meet these standards. Our service team calibrates the instruments to exacting UKAS and internal standards. High quality test materials that are consistent from batch to batch are also produced and distributed by SDL Atlas.

Test Materials

Test materials are a critical part of many textile tests. SDL Atlas produces and distributes a complete line of test materials. Each batch is thoroughly tested to ensure conformity and consistency from batch to batch.

Test materials selection include:

- Multifiber
- Cork Liners
- Abradants
- Phenolic Yellowing
- Detergents
- Ballasts
- Crocking Fabric

Calibration & Service

- UKAS calibration
- ISO calibration
- Service support
- Factory trained representatives
- SDL Atlas service technicians



SDL Atlas is a UKAS accredited calibration laboratory No. 0688. With fully trained technicians located in Europe, Asia, and North America, we are prepared to support our customers in maintaining their investments and their confidence in their testing instruments.

Providing confidence in standard based testing
through expertise and global partnering



SDL ATLAS LLC

3934 Airway Drive
Rock Hill, SC 29732-9200, USA
Telephone: +1 803 329 2110
Facsimile: +1 803 329 2133
Website: www.sdlatlas.com

SDL ATLAS LTD.

1B, Building B, JunXiangDa Mansion,
No. 9 Zhongshan Yuan Road,
Nanshan, Shenzhen, 518052, China
Telephone: +86 (755) 2671 1168
Facsimile: +86 (755) 2671 1337
Website: www.sdlatlas.com

SDL ATLAS LTD.

3J, Garment Centre, 576 Castle Peak Road,
Kowloon, Hong Kong.
Telephone: (852) 3443 4888
Facsimile: (852) 3443 4999
Website: www.sdlatlas.com